

2010 North East Criterium League v2

Welcome to the North East Criterium League, a dedicated league run under British Cycling Technical regulations. There three races per event the first is for 4th category licence holders only, the second is for Women only starting behind the first race, the final race is for 3rd / 4th category riders.

Further dates maybe add for Southbank at Middlesbrough and Croft these will be subject to venues being available.

How it works

Riders registration is £5.00 you will then be able to enter races online.

All registration and entries will be online via entry web

As this is a new concept there will be support from British Cycling Regional Events Officer, to assist clubs and riders who have not been involved in running events before.

The maximum number of riders per race is 45 + 5 reserve places will be available.

Entry Fee

Entry will close at **midnight** the day before the race.

Regional B, 3rd/4th Cats Senior Riders, Juniors/Women Riders £10.00
1 hour + 2 laps

Regional C+, 4th only, Senior Riders, Juniors/Women Riders £6.00
30 mins + 2 laps

Go Race, Women Only, Senior Riders, Juniors/Women Riders £6.00
25 mins + 2 laps

Riders not affiliated to the league will be charged the following additional amounts.

Regional B + £6.00 and Regional C+ + £6.00

We will take league registered riders who require a day license

Day/Date	Cat	Start time	Race Duration
June 5 s	4 th only	16.00	30 mins + 2 laps
	Go Race Women	16.01	25 mins + 2 laps
June 12 s	3&4 th category	17.00	60 mins + 2 laps
	4 th only	16.00	30 mins + 2 laps
	Go Race Women	16.01	25 mins + 2 laps
	3&4 th category	17.00	60 mins + 2 laps
June 19 s	4 th only	16.00	30 mins + 2 laps
	Go Race Women	16.01	25 mins + 2 laps
	3&4 th category	17.00	60 mins + 2 laps
	4 th only	16.00	30 mins + 2 laps
July 3 s	Go Race Women	16.01	25 mins + 2 laps
	3&4 th category	17.00	60 mins + 2 laps
July 10 s	4 th only	16.00	30 mins + 2 laps
	Go Race Women	16.01	25 mins + 2 laps
	3&4 th category	17.00	60 mins + 2 laps
	4 th only	16.00	30 mins + 2 laps
July 24	Go Race Women	16.01	25 mins + 2 laps
	3&4 th category	17.00	60 mins + 2 laps
July 31	4 th only	16.00	30 mins + 2 laps
	Go Race Women	16.01	25 mins + 2 laps
	3&4 th category	17.00	60 mins + 2 laps
	4 th only	16.00	30 mins + 2 laps
Aug 7th	Go Race Women	16.01	25 mins + 2 laps
	3&4 th category	17.00	60 mins + 2 laps
Aug 14 th	4 th only	16.00	30 mins + 2 laps
	Go Race Women	16.01	25 mins + 2 laps
	3&4 th category	17.00	60 mins + 2 laps

Aug 21 st	4 th only	16.00	30 mins + 2 laps
	Go Race Women	16.01	25 mins + 2 laps
	3&4 th category	17.00	60 mins + 2 laps
Aug 28 th	4 th only	16.00	30 mins + 2 laps
	Go Race Women	16.01	25 mins + 2 laps
	3&4 th category	17.00	60 mins + 2 laps

 Race Headquarters

Saturday HQ

Hetton County Park, Hetton le Hole, Downs Pit Lane, Sunderland, DH5 9
 From the South, leave the A1(M) at junction 62, then at roundabout take the 3rd exit onto the A690 approximately 5 miles from A1.
 From the North, A19, A690, A182 approximately 3 miles from A182.

Google Maps:

http://maps.google.co.uk/maps?f=q&source=s_q&hl=en&geocode=&q=54.824698,-1.441011&sll=54.821731,-1.4429&sspn=0.011522,0.038581&ie=UTF8&ll=54.822893,-1.442084&spn=0.011521,0.038581&t=h&z=15

Open from 15.30pm and has car parking and changing/toilet facilities.

 Signing On

Signing on is at the race headquarters and is open from 15.30pm Hetton

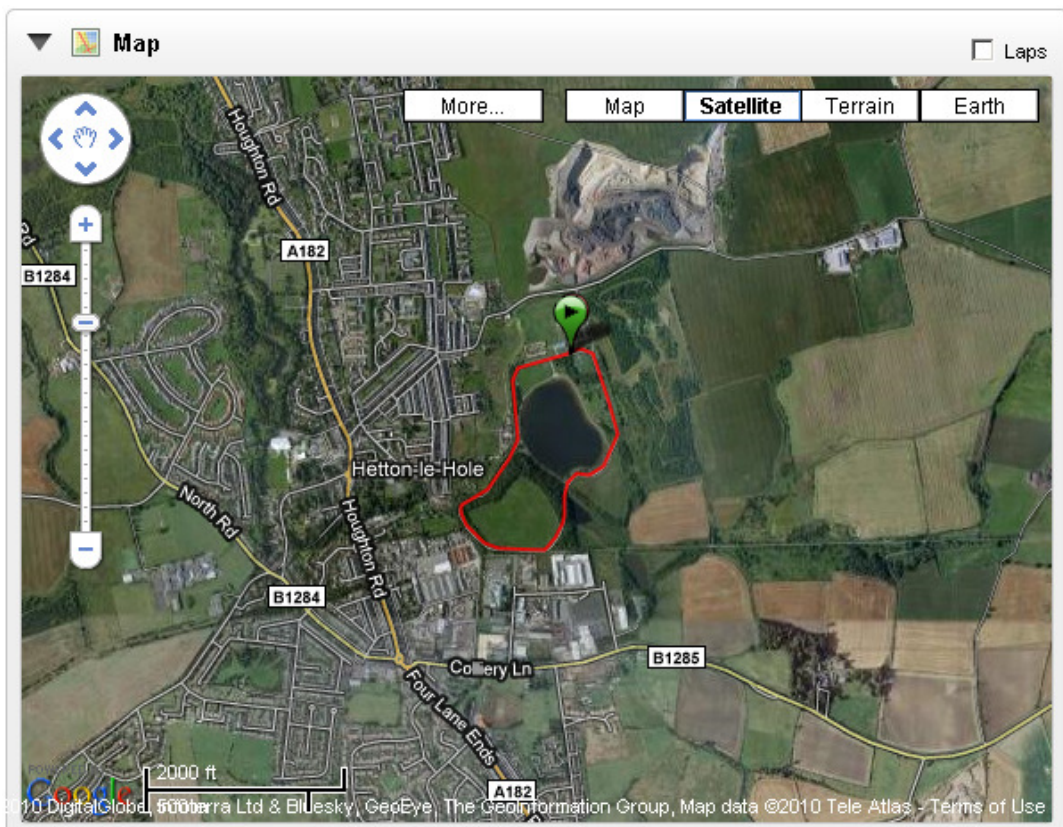
 British Cycling Membership and Licences

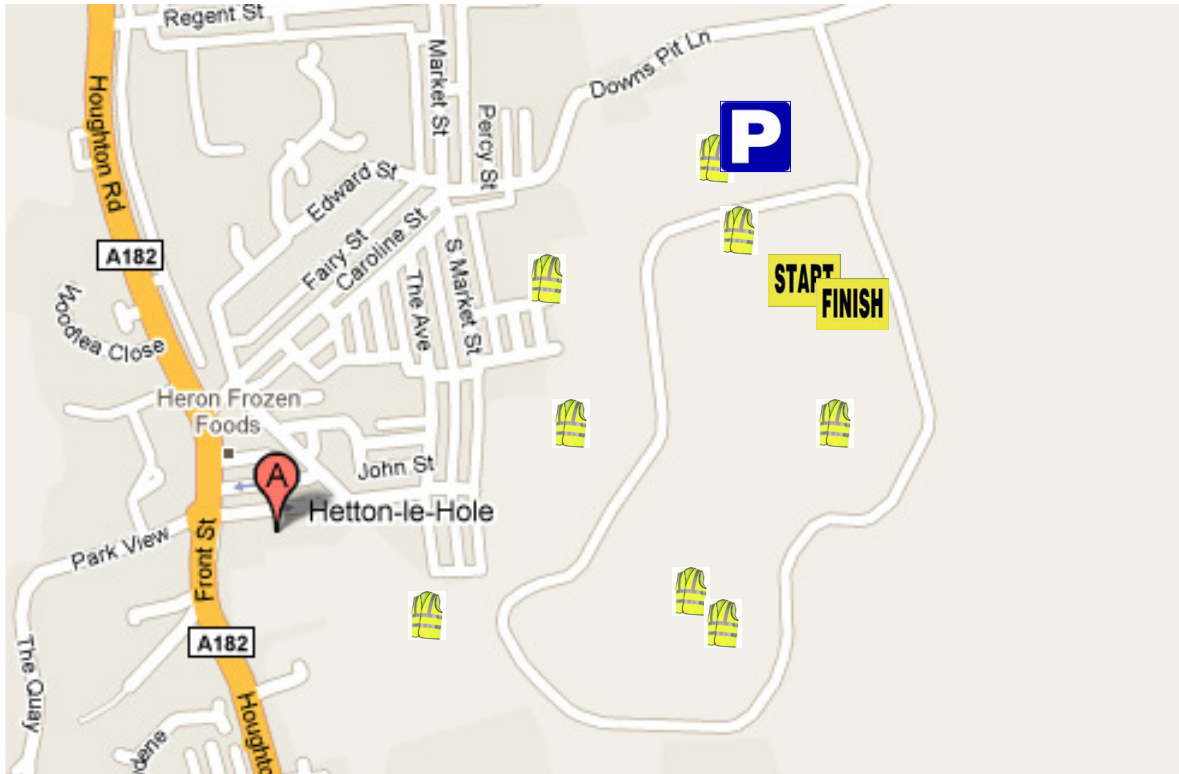
You must present your 2010 racing licence when signing on licences will be retained & returned once race numbers are returned. **The Go Race Womens Only event is open to non BC members**

All Youth A riders with dispensation should register for the Regional B event. You will need to have earned 15 points and should apply to B.C. H.Q. To receive a dispensation card.


 Race Numbers

Two body numbers must be worn unfolded on the left pocket and a shoulder number which must be worn on the RIGHT shoulder.





Marshal requirement x 6
Judges x 2
Commissaire

 The Start

Races are mass start please follow the instruction of the Chief Commissaire.

 Lapped riders


Except for women, individual lapped riders must retire and remove their race numbers. In the event of a leading group of riders lapping the main field, the riders being lapped must follow the commissaires instructions. During this time, racing in the main group will be neutralised and the riders moved to the side to allow free passage of the leading group. Riders lapped in this way may continue in the race but must not aid the leading group in any way.

 Race Service

There are no laps out allowed on this circuit unless, at the Chief Commissaire's discretion, it is deemed that the surface is affected due to extreme weather conditions (BC TR 20.3.3).

 Result

A full result will be published on the official event website at www.bcne.co.uk as soon as possible after it is confirmed.

 Race Regulations

The races will be run under the technical regulations of the British Cycling Federation. Licence points are available in both races, riders who are eligible can ride in both races on Saturdays.

 League Regulations & Points

A riders best 5 race results will be eligible for league points, each finishing rider will receive league points the winner gaining 45 points.

Parking

Hetton has adequate parking, please park in an orderly fashion.

Spectators/Refreshments

Spectators are welcome please keep off circuits and obey instructions from marshals and officials. Hetton has a vending machine and toilets available to competitors and spectators,

Officials Briefing / Marshalls

Organising clubs running their event will need to arrive at the venue 10 minutes before sign on opens

Communications

All race communication will be by means of CB Radio channel 35. There will be separate channels for commissaires and race organisation and these will be advised at the Officials Briefing.